



State of the City Address

Presented by
Mayor John Marchand

June 28, 2018

Working Together & Getting Things Done

FY 2017-2019 City Council Priorities



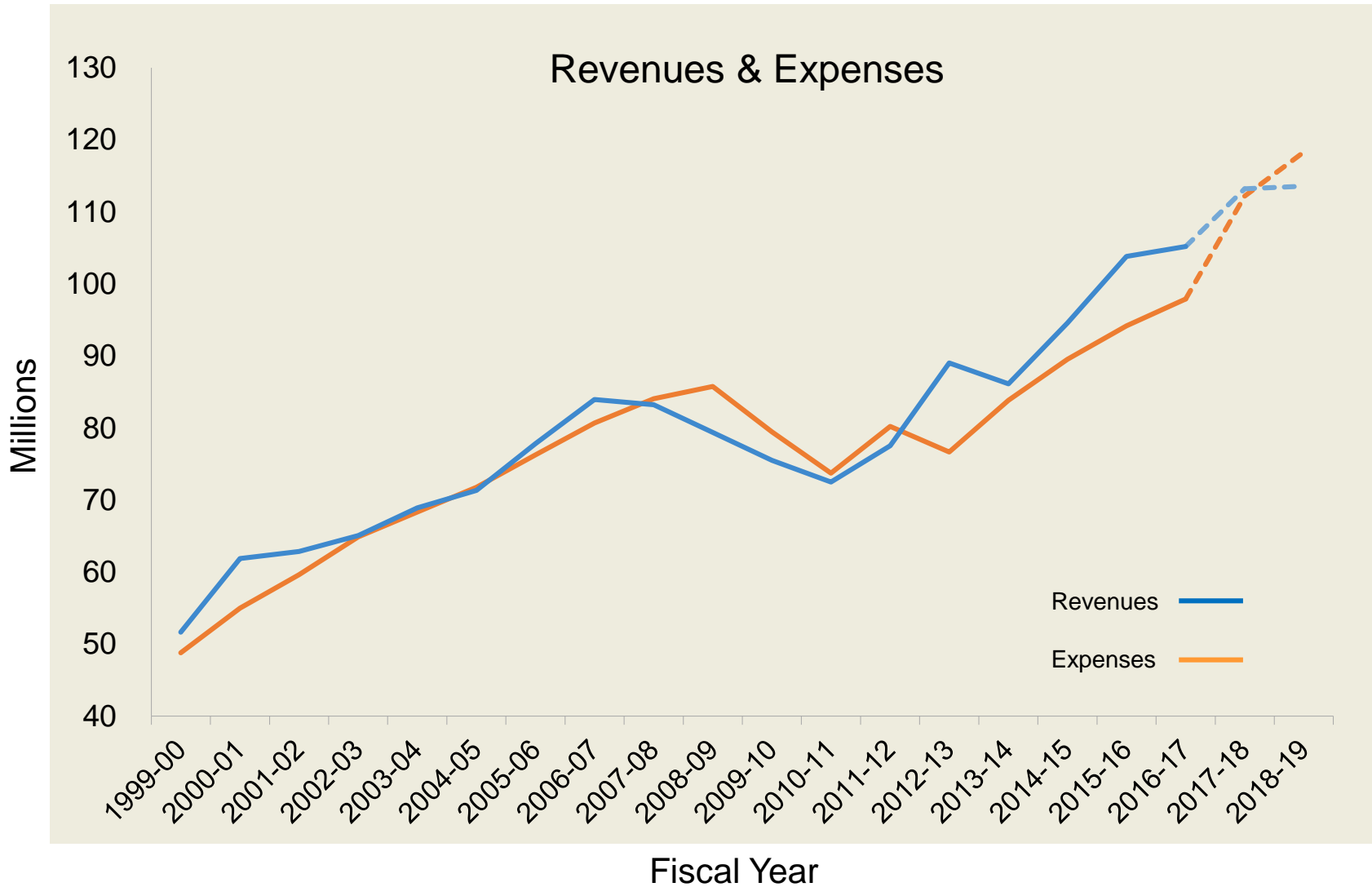
- Downtown
- Innovation and Economic Development
- Disaster Preparedness and Public Safety



- Asset Management
- Long-Term Financial Stability
- Affordable Housing and Homelessness

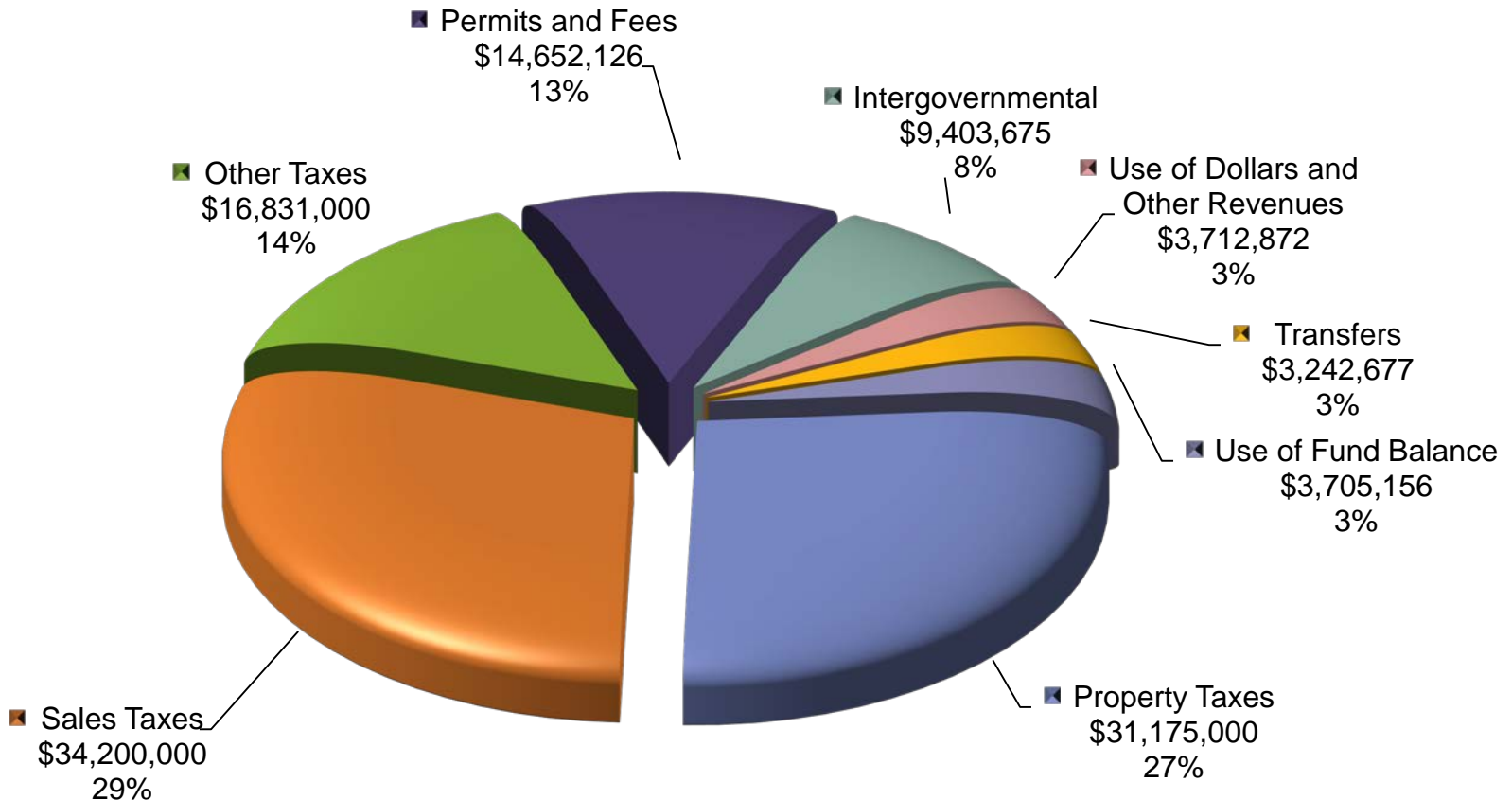


Long-Term Financial Viability



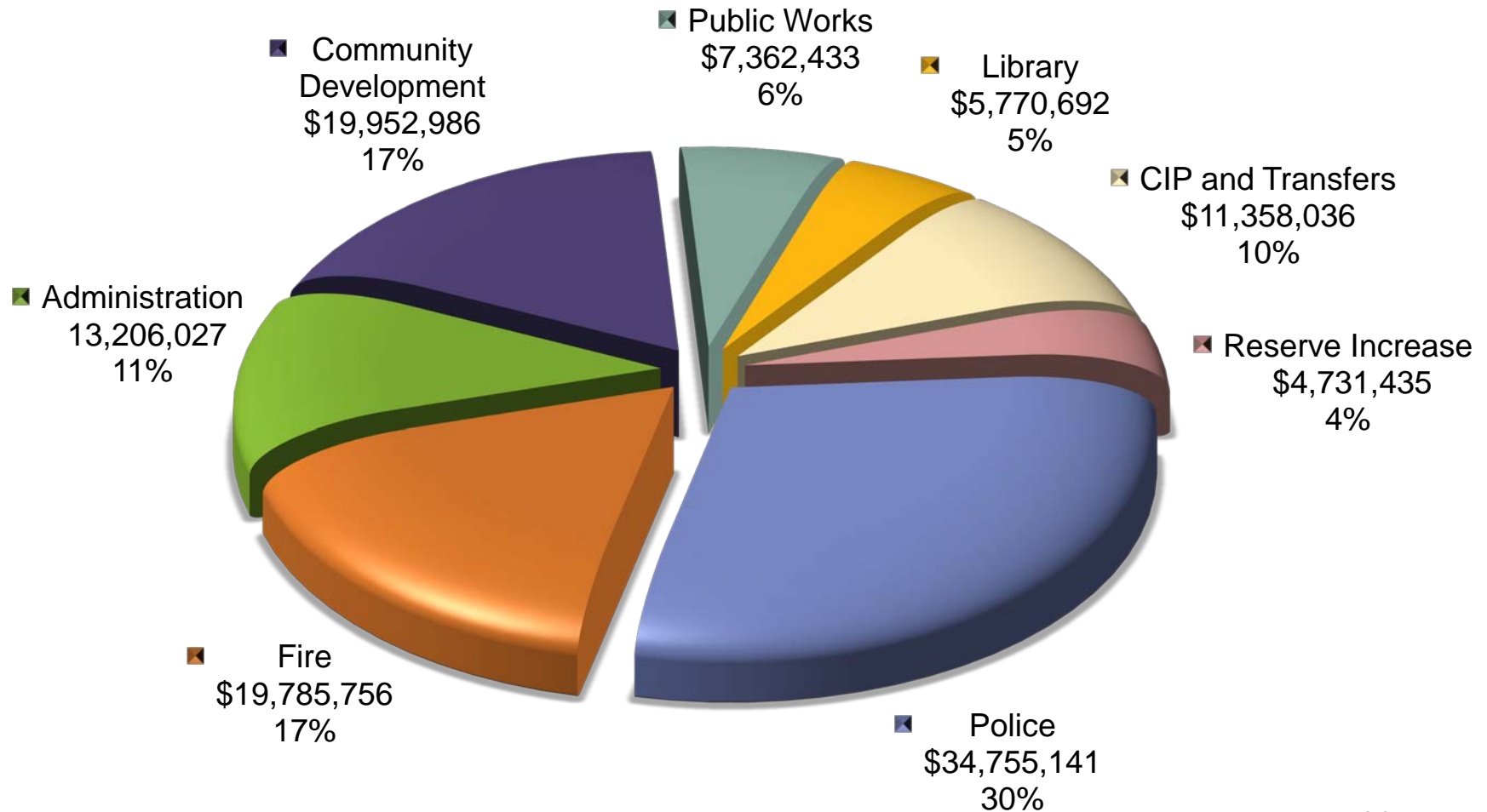
Where Does the Money Come From?

\$116,922,506



Where Does the Money Go?

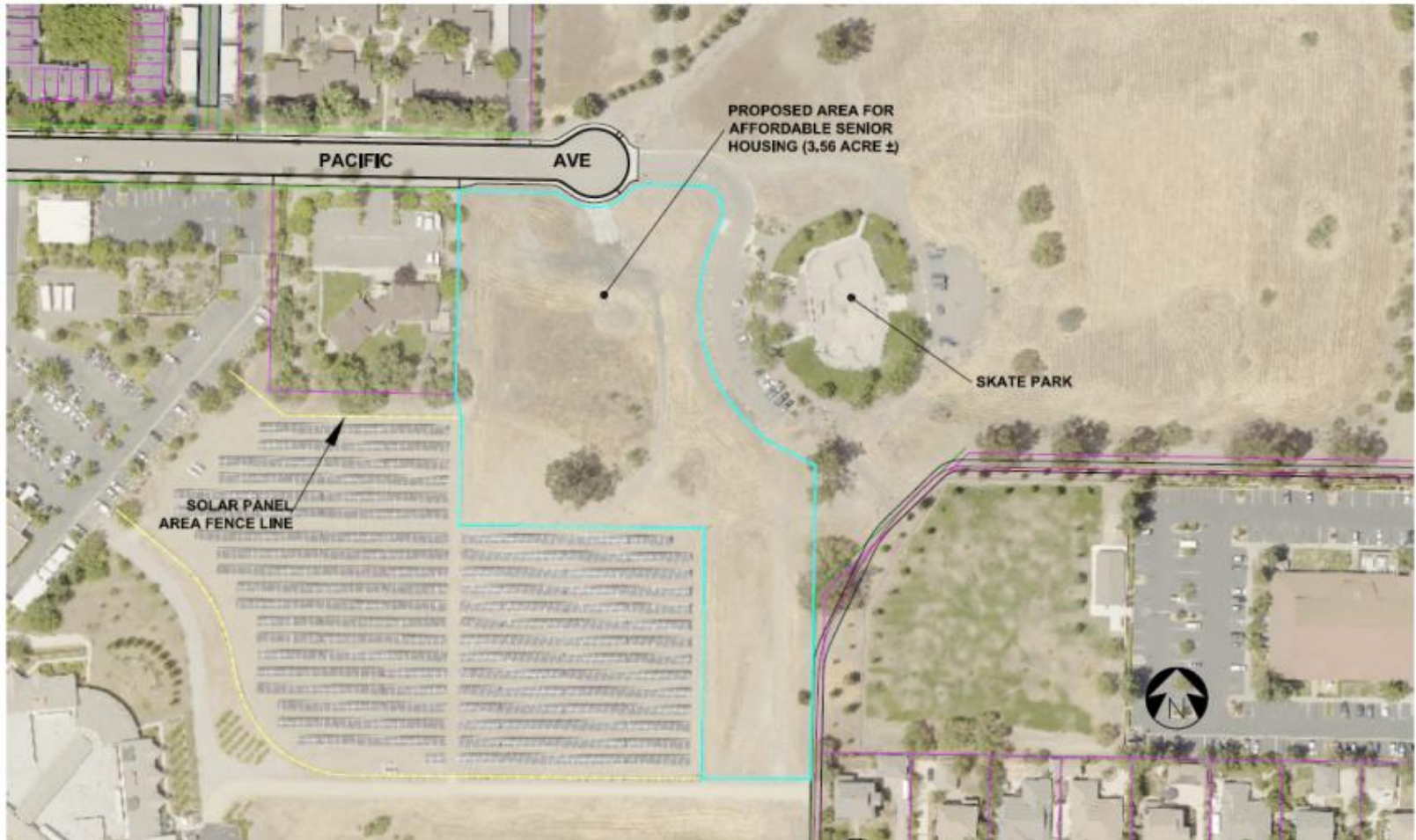
\$116,922,506



Downtown Approved Plan



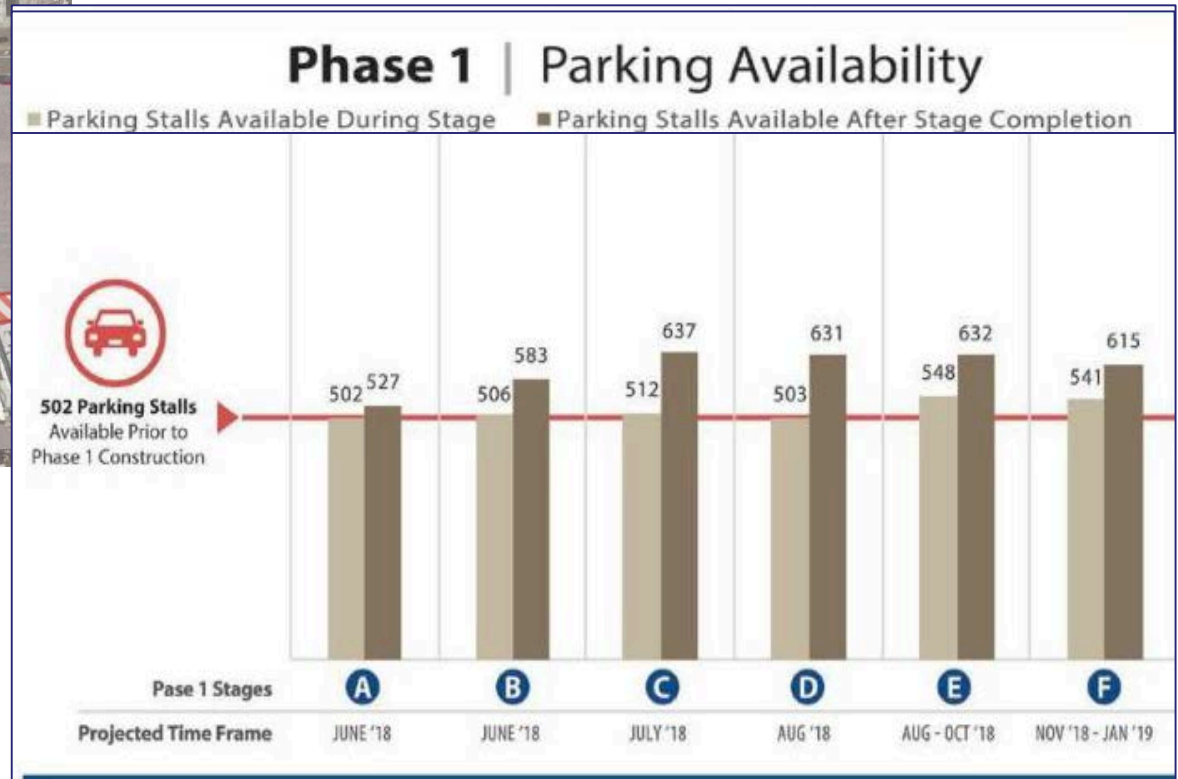
Downtown Stockmen's Deal



Downtown Interim Parking Plan



Downtown Interim Parking Plan



New Businesses

Manufacturing, Retail and Services



YOGA | PILATES | CYCLE | BARRE

LIVERMORE | DUBLIN
SAN RAMON



New Restaurants



New Business Development Projects

The Shops



Anchor tenants include: ULTA, Crate & Barrel Outlet, Ross and Kirkland's

New Business Development Projects

Republic Square



- Retail and restaurants
- Two hotels
- 282,000 sq. ft. of building area
- 1,237 parking spaces



New Warehouses, Manufacturing Buildings & Distribution Centers

7551 Longard Road - 90,000 sq. ft.



7600 Patterson Pass Road - 86,700 sq. ft.



6755 Brisa Street - 127,226 sq. ft.



7600 Hawthorn Avenue – 241,591 sq. ft



Livermore Small Business Resource Fair



Library Services

Summer Reading Program



Create Lab



Library of Things



Livermore Reads Together



New Homes

Legacy – First Street



Wayland Homes – Sonoma Ave



The Vines – East Avenue



Central Crossing – Central Avenue



Chestnut Square



Civic Center Meeting Facility and Emergency Operations Center



Estimated Completion - Spring 2019

Train Depot Relocation

After 40 years of private ownership and deterioration, our Train Depot will return to its historic use.

- Supported by the Historic Preservation Commission and the Livermore Heritage Guild which was founded to protect the depot.
- Will serve as the new transit ticketing office at the Downtown Bus/ACE Transit Center.



Stockmen's Park



Successful Communities

Diablo Magazine 2018 Best of the East Bay

ultra-spective
photography

JOYA

YOGA | PILATES | CYCLE | BARRE

LIVERMORE | DUBLIN
SAN RAMON

THE LAST WORD
DRINK EAT GATHER



Family owned
since 1976

THE PURPLE ORCHID
WINE COUNTRY RESORT & SPA



SAUCED

BBQ & Spirits



UNLOCK YOUR ADVENTURE
LIMITLESS
ESCAPE GAMES
LIVERMORE



LIVERMORE
CALIFORNIA

East Bay Times BEST in the East Bay 2018



Page Mill Winery



Yelp's Top 100
Places to Eat in the
United States



The 100th Rodeo

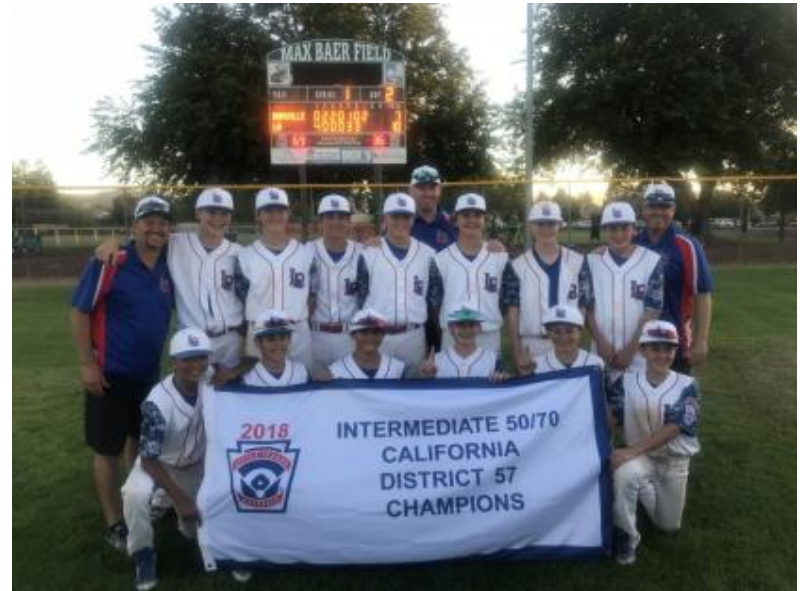


Play Ball!

Join the Mayor at the
2018 Little League World Series
July 29th-August 5th



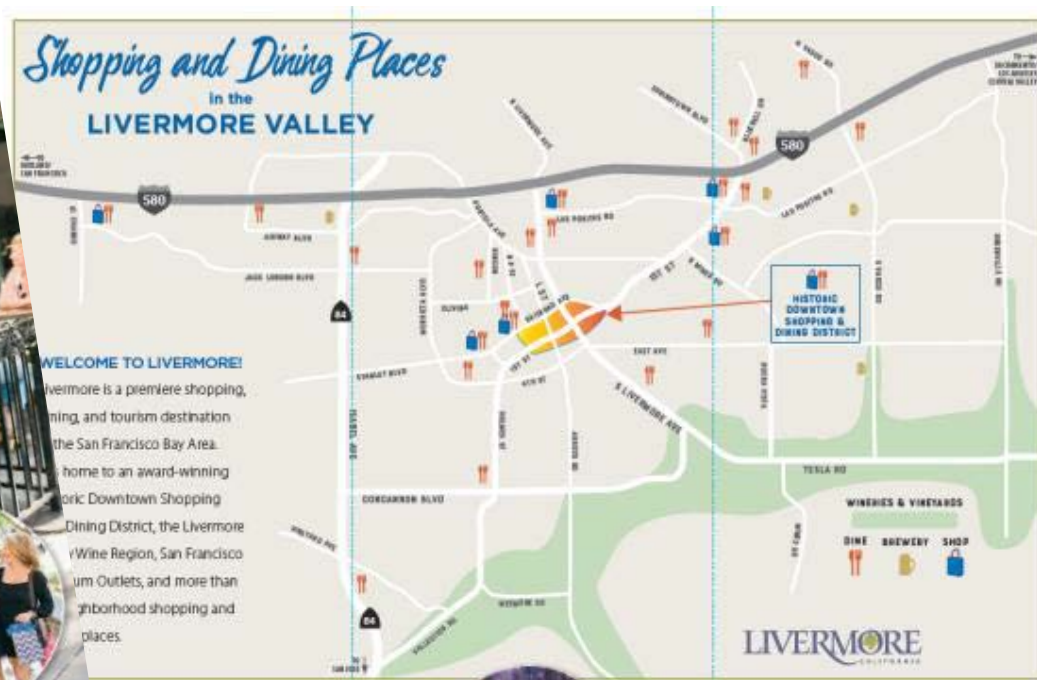
- Established June 2015 by the United States Conference of Mayors
- Strengthen family and community bonds through local baseball events.



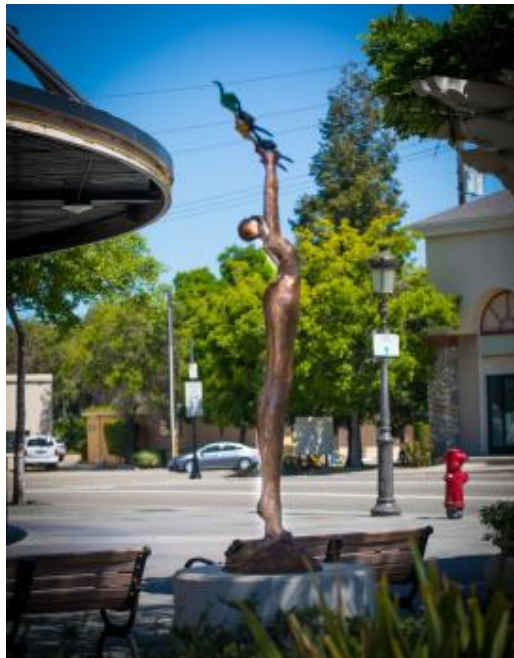
Tourism and Promotion

Marketing Partners:

- Livermore Chamber of Commerce
- Livermore Downtown Inc.
- Livermore Valley Wine Growers Association
- Visit Tri-Valley
- Premium Outlets



The Arts



The Performing Arts

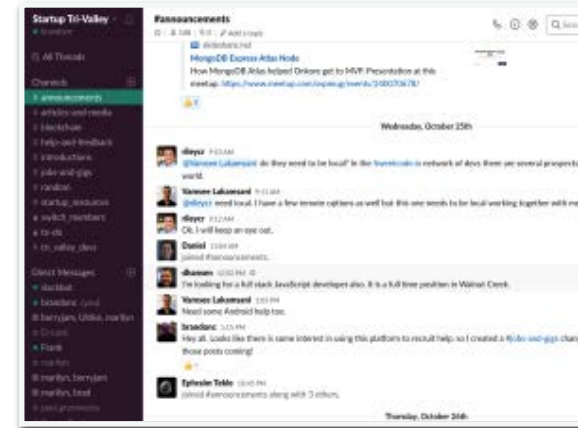




Physical space to
gather, connect & work



Events to foster connections
& shared learning



Online collaborative
community for everyone



Chabot Las Positas College

Veterans First

Provides support services to those who have served, currently serving in the armed forces, and also dependents and spouse of Veterans.

- Assist with successful transition from Military to College
- Provide clear and adequate information regarding the GI-Bill benefits process
- Build a partnership between LPC Veterans First Program, Community Veteran Organizations and Services
- Educate the college and community about the need for resources and assistance for you transitioning from military to college



Vets to Tech

Connects Veterans with job opportunities in technology, manufacturing and construction. Partners include:

- Lawrence Livermore Labs
- Chabot Las Positas College
- Alameda County Workforce Investment Board
- Innovation Tri Valley
- I-Gate
- Local Businesses



This Year's Vets 2 Tech Week enabled student veterans to visit two of the East Bay's largest employers:

- LLNL
- Lam Research (semi-conductor manufacturer in Livermore)

Innovation Tri-Valley

“Dedicated to delivering both economic and social impact through business innovation, education innovation, public-private innovation, and branding building innovation.”

- Connecting the businesses, research labs, educational institutions, and civic leaders in the Tri-Valley region
- Generating job growth and economic vitality
- 2018 #Game Changers Awards
 - Founders Award – Sandia Labs
 - Social Innovator Award – Axis Community Health



Sandia National Laboratories

Livermore Valley Open Campus (LVOC)

Recipient of the 2018 #Game Changers Founders Award

- Innovation hub along the boundaries of LLNL and Sandia National Laboratories
- Driven by collaboration with industry and academia in areas like transportation energy, cybersecurity, bioscience and advanced manufacturing
- Researchers from private industry and academia collaborate freely with lab personnel to contribute to the next generation of big ideas



Lawrence Livermore National Laboratory

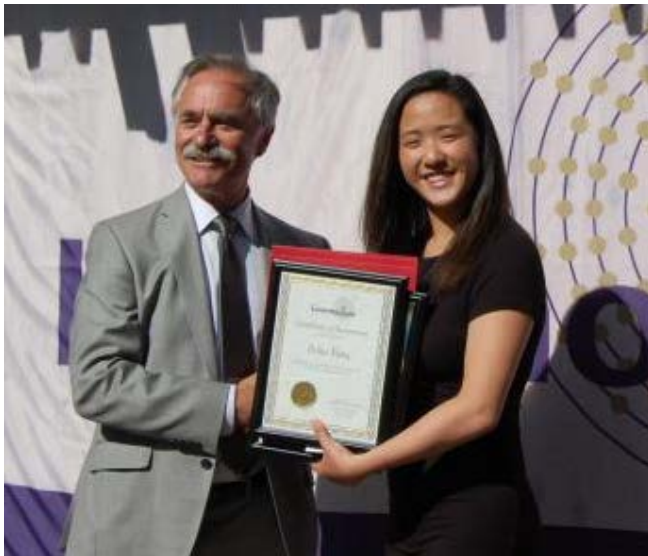
LLNL was one of the few sites to include their Mayor during the Secretary of Energy visits to the various Lab sites



Livermore Joint Unified School District



Livermorium Day



Day of Service



Working together. Getting things done.



Something for everyone!

