

Connecting the Tri-Valley to “Regions Up” Statewide Economic Strategy

Micah Weinberg
CEO of California Forward

CA FWD:



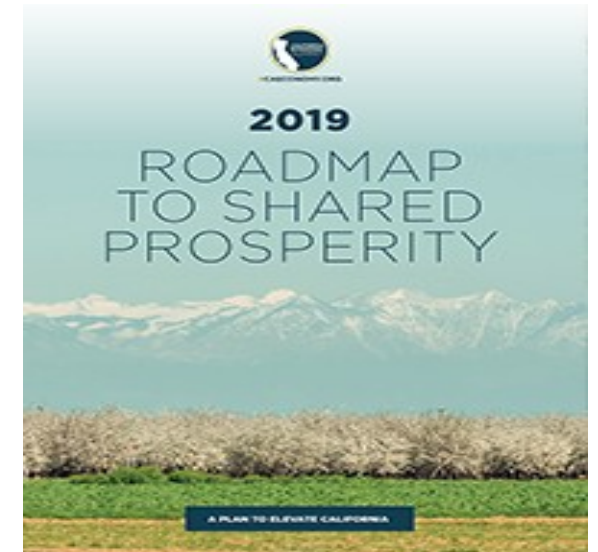


California Forward is a 12 year old cross-sector civic leadership group committed:

- To producing prosperity for all Californians in all of the state's regions; and,
- To improving government performance and accountability

The Economic Summit is a project of CA Fwd that, since 2012, has:

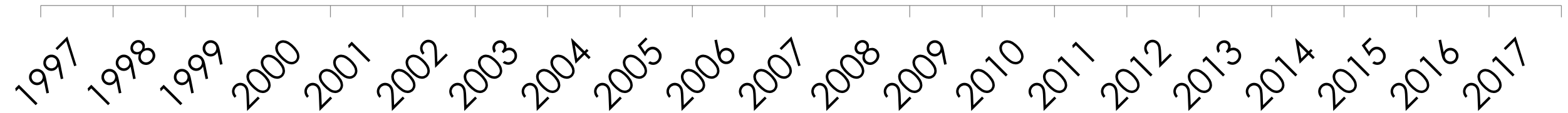
- Brought together a dedicated group of public, private and civic sector leaders from all over the state
- Developed and is implementing an agenda for collective action, the Summit's Roadmap to Shared Prosperity



California is Growing Faster than the U.S.

California: 3.2% annualized growth over 20 years

United States: 2.3% annualized growth over 20 years



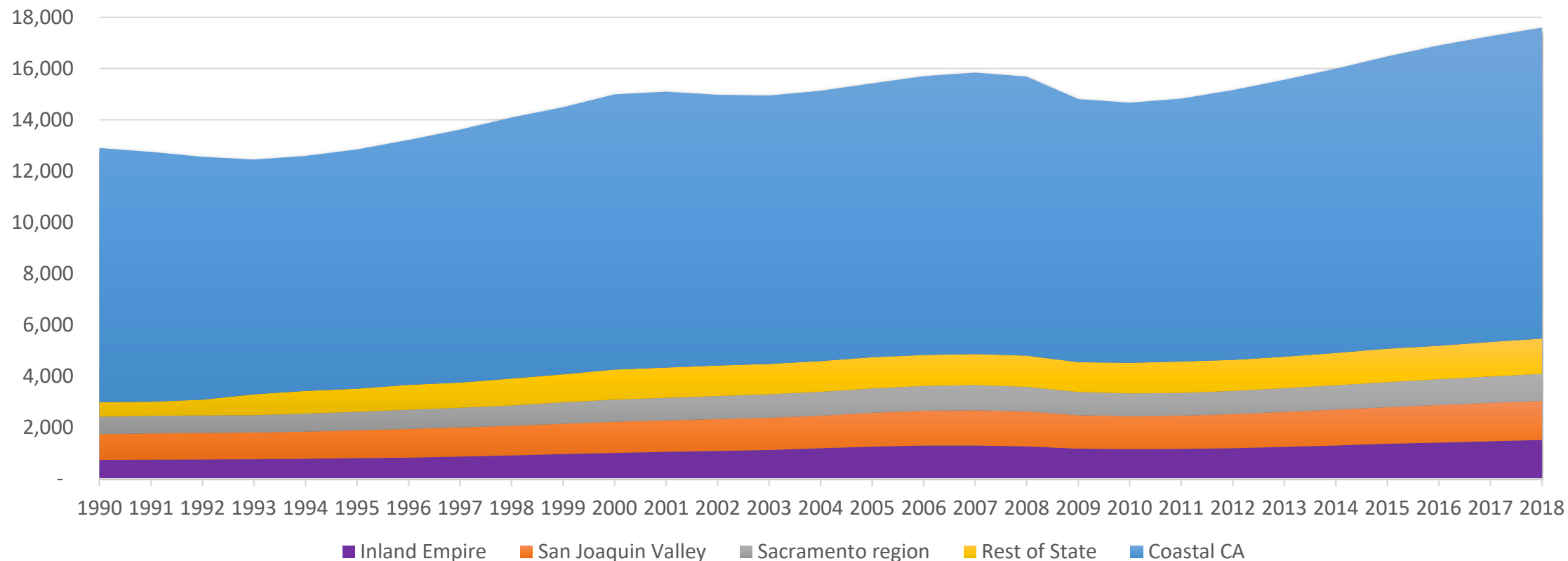
U.S. Bureau of Economic Analysis, retrieved from FRED, Federal Reserve Bank of St. Louis, March 29, 2019

CA FWD:

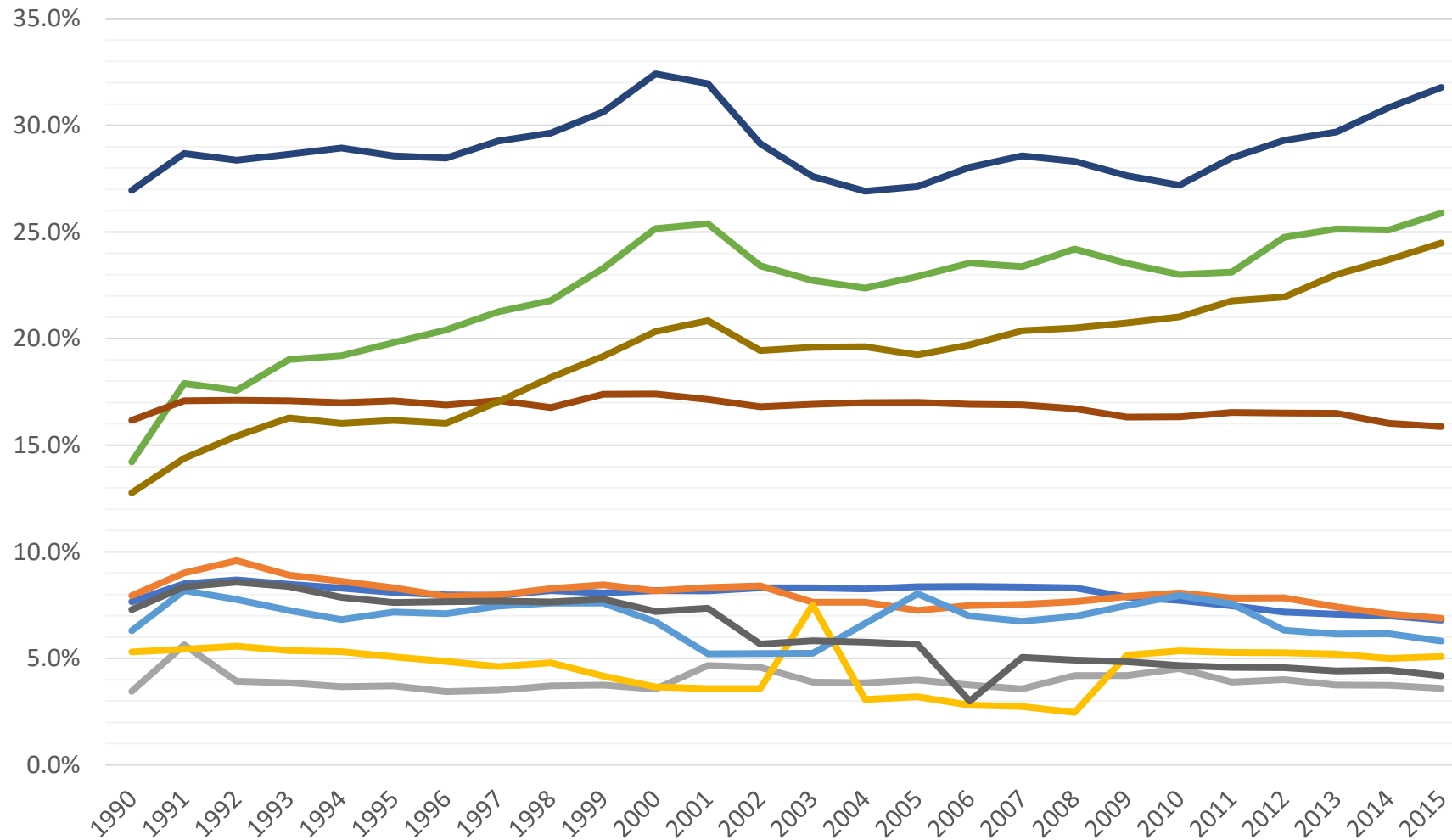


70% of job growth since 2010 has gone to costal California.

Total Employment by Region, in thousands, 1990-2018



The economic structure of inland California is also distinct. The knowledge industry is booming in the Bay Area (growing to 25%+ of jobs) but remains below 10% for the San Joaquin Valley



Source: State of California Employment Development Department

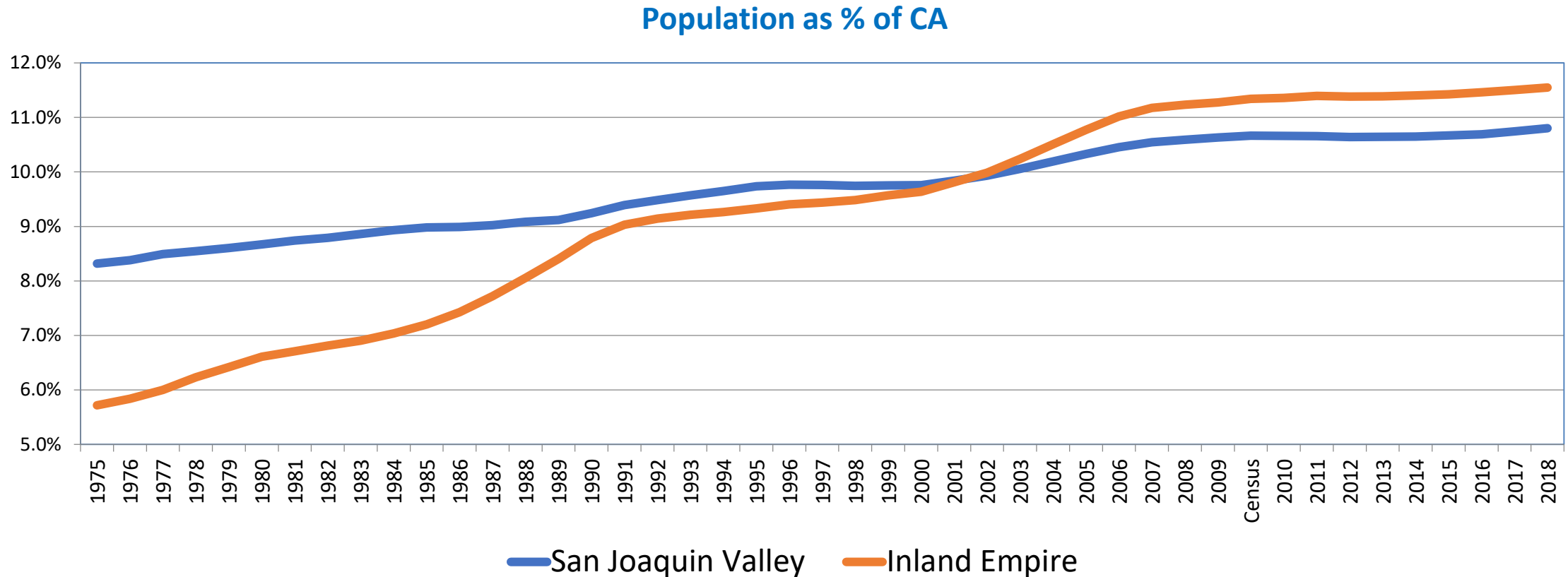
<http://www.labormarketinfo.ca.gov/geography/fmi-by-geography.html>

Note: The 8 San Joaquin Valley counties include Fresno, Kern, Kings, Madera, Merced, San Joaquin, Stanislaus, and Tulare

CA FWD:



Yet Inland California is growing and the San Joaquin Valley and Inland Empire are now nearly 25% of the State's population

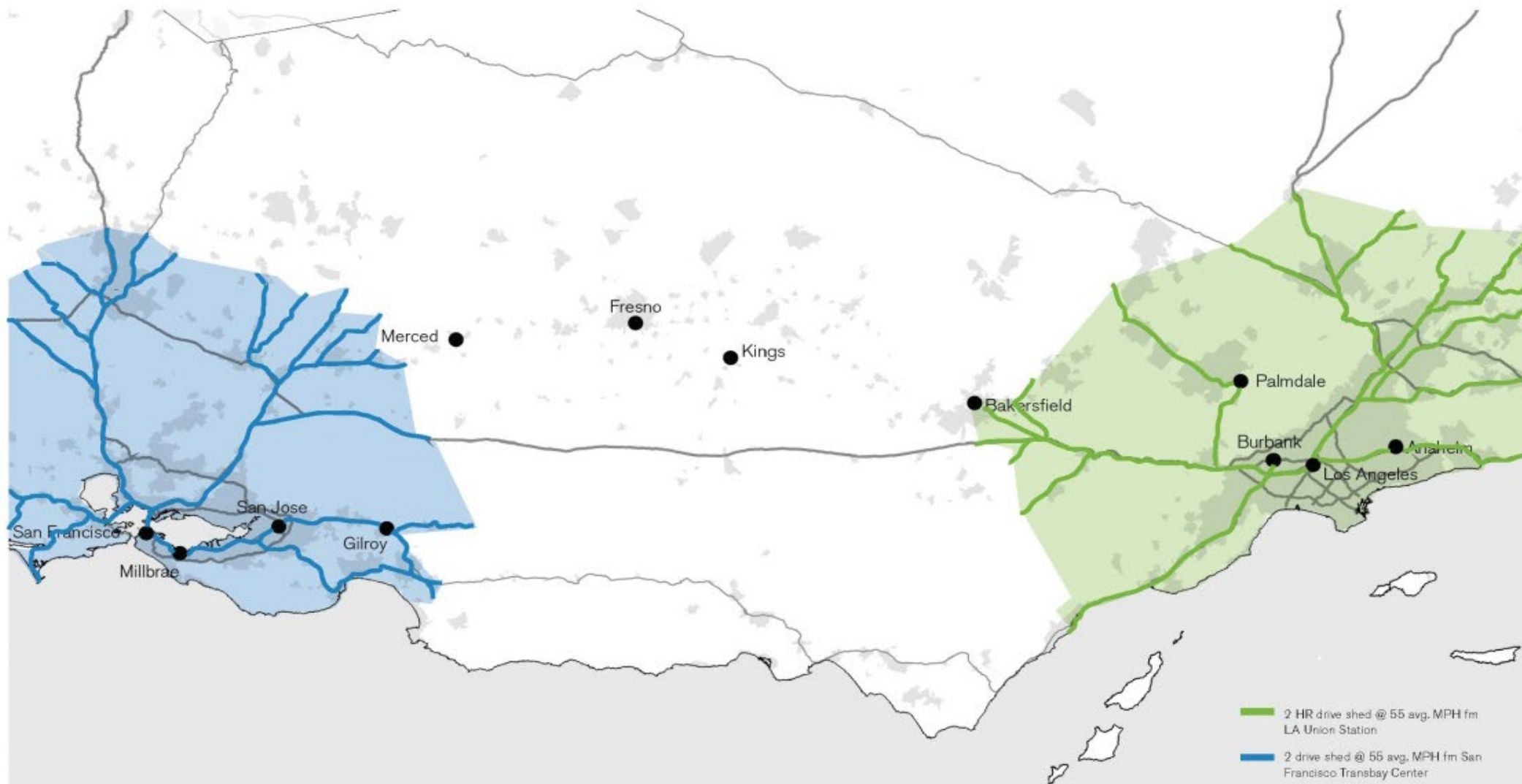


Development Opportunities

Benefits to Station & Non-Station Cities

2 Hours travel catchment area - by car:
Central Valley cities remain isolated

State investments provide tangible benefits: While many inland CA cities are 2+ hours from the coast today...

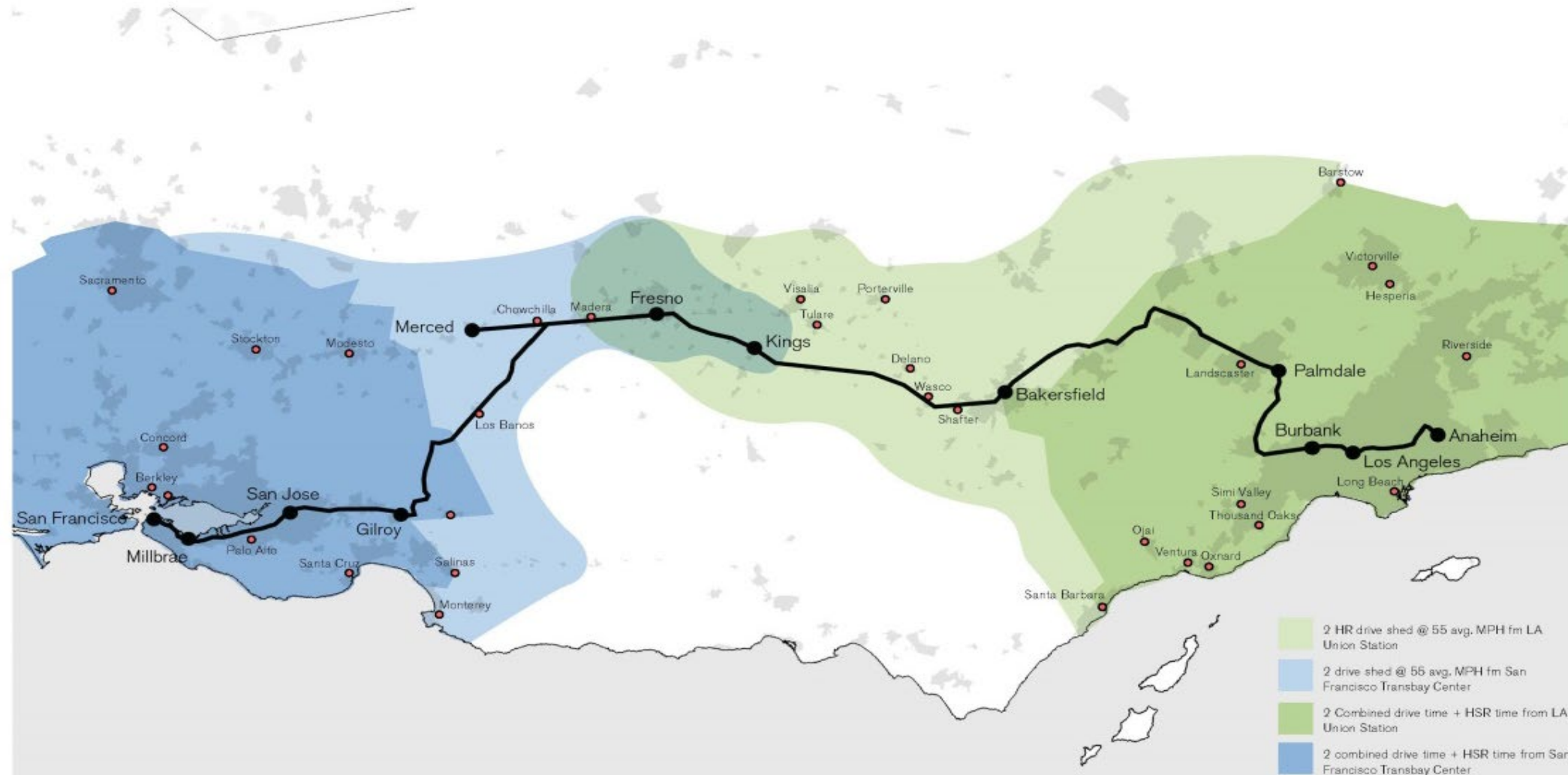


High-speed rail will integrate state and connect inland and coast in 1 hour.

Development Opportunities

Benefits to Station & Non-Station Cities

2 Hours travel catchment area - by car and extended by HSR Service:
Central Valley cities now connected



Regions Rise Together is about leveraging these assets and realizing the Governor's vision of CA4All, by:

- Recognizing and building on the distinct strengths and assets within the State's various regions.
- Encouraging new cross-sectoral partnerships within and across regions.
- Maintaining and promoting the State's values around issues like inclusive growth (e.g. high road jobs) and solving our climate crisis.
- Using the leadership of the Governor to encourage investment, travel and partnership between coast and inland.

Regions Rise Together

A partnership of:



Office of Governor
GAVIN NEWSOM



**CALIFORNIA
STEWARDSHIP
NETWORK**

Thriving Regions. Thriving State.

And many other local partners across the state!

To build a plan together for inclusive, sustainable growth
across California



What is Regions Rise Together?

- A vision for inclusive economic development and sustainable land use and transportation planning for inland California.
- A process to gather input from stakeholders across California's diverse regions.
- An opportunity to reinforce the State's core values around inclusivity, sustainability and resilience.
- A set of recommendations to strengthen economic security, opportunity and mobility as well as to better connect inland California with the rest of the state.

The Regions Rise Together initiative initially comprises three areas of work:

1. Regions Up Planning and Partnerships
2. Leveraging Leadership to change our mental map of California
3. Connections Across regions that better link California and integrate across statewide systems.

1. Regions Up Planning and Partnerships

Examples of some initial ideas include:

- Highlighting great projects taking place within each region.
- Supporting and institutionalizing cross-sector civic partnerships at the regional scale (such as the Partnership for the San Joaquin Valley).
- Strengthening and leveraging the role of regions in planning (e.g. COGs).
- Exploring alignment of state resources towards regions and expanding targeted outreach to inland California for Statewide funds and programs.

2. Leveraging leadership to change our mental map of California.

Some initial ideas include:

- Encouraging companies to expand facilities to inland parts of the state, not to locations outside of California.
- Facilitating peer to peer learning between regions and communities, such as establishing Sister Cities within CA.
- Encouraging tourists and visitors to travel to all parts of CA.
- Encouraging philanthropy and investors to put resources into inland CA (e.g. leveraging opportunity zones and eco-system investment services).

3. Making connections across regions to better link California and integrate statewide systems.

Some initial ideas include:

- Realizing an integrated Statewide Rail system that leverages the backbone of high-speed rail.
- Integrating across the state's public higher education systems.
- Further preserving natural and working lands.
- Establishing new tools for infill and urban revitalization.
- Upgrading water systems.
- Expanding access to Broadband, especially in rural areas.

DISCUSSION

How can we help support and accelerate your region's success through this project?