



Overview and Update

Essential Climate Adaptation Strategy

- California faces a future of water instability, more rain, less snow, and more frequent extreme events like drought and flood
- The Delta Conveyance Project protects against future water supply losses caused by climate change, sea level rise and earthquakes
- The Delta Conveyance Project helps ensure that the State Water Project can capture, move and store water by making the most of big, but infrequent, storm events



Bethany Reservoir and the start of the California Aqueduct

[CLICK HERE](#) to view our Quick Question video series

Prudent Public Policy

- **27 million Californians** rely on the State Water Project
 - **That's 1 in 12 Americans**, including about 6 million disadvantaged community members
- Communities must have confidence in the stability and efficiency of the State Water Project in the face of climate change
- Local resiliency requires a stable State Water Project to support recycling, groundwater management, storage and conservation
- Water managers need functional water infrastructure to meet all water supply needs, including health and safety, economy, environment and water quality

DROUGHT RELIEF

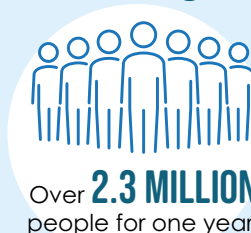
MISSED OPPORTUNITY

If the Delta Conveyance Project was operational during the high rain events in January (1/1/23 - 1/31/23), we could have moved

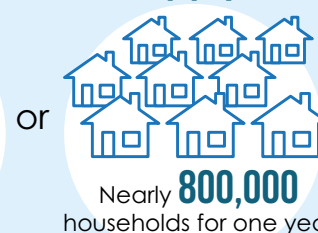
228,000 acre-feet of water

into the San Luis Reservoir

228,000 acre-feet of water = enough water to supply:



Over **2.3 MILLION** people for one year



Nearly **800,000** households for one year

The theoretical DCP diversion of 228,000 acre-feet is about **40%** of the total volume exported by the SWP in water year 2022.



Delta Conveyance Project

Spring 2023



Proposed Project: Bethany Alignment

6,000 cfs

2 intakes

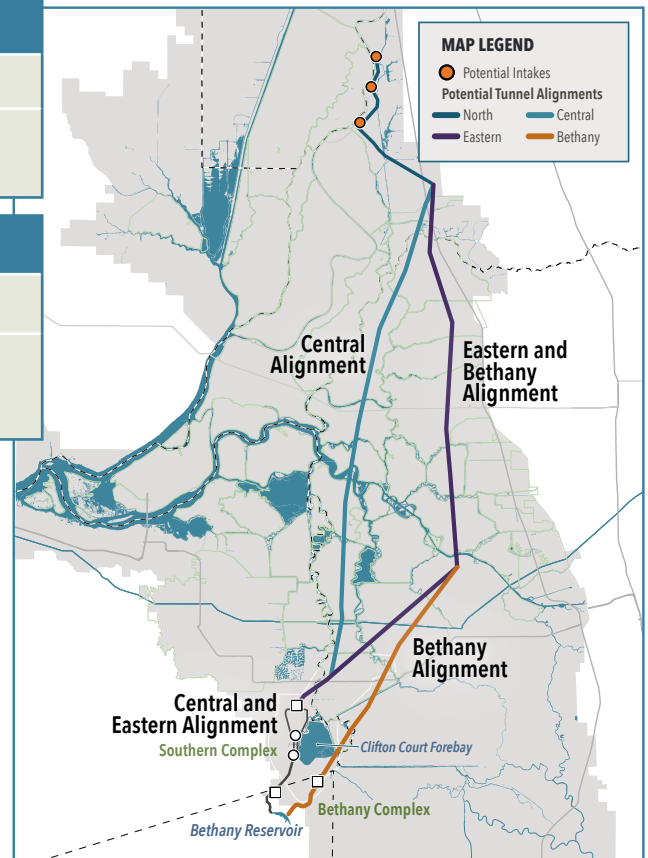
Pumping plant connects the tunnel directly to the existing Bethany Reservoir

Alternatives: Central or Eastern Alignment

3,000, 4,500 or 7,500 cfs

1, 2 or 3 intakes

Southern complex with pumping plant and forebay that connects to existing SWP south Delta pump facilities




*Only one tunnel alignment will be selected.

A Very Different Project

Changing from 2 tunnels to 1 tunnel opened the door to many design and engineering innovations

- The project is downsized, rerouted, redesigned and is responsive to community needs
- Considered ways to minimize noise, traffic, power needs, aesthetic effects, boating and waterway effects, land disturbance
- Launch shafts moved away from intakes, the proposed route avoids the central Delta, acreage needed to store tunnel material has been minimized, avoids using Highway 160, power near sandhill crane habitat has been undergrounded, there are no barge landings and no need for forebays

 [CLICK HERE](#) to see a fact sheet comparing the Delta Conveyance Project to previous conveyance proposals

Robust Community Engagement

- Environmental Justice/Disadvantaged Communities focus using dedicated consultant and based on guidance about best practices from statewide outreach experts
- Extensive coordination with Tribes
- Delta community engagement to obtain local insight during conceptual design/engineering to avoid and minimize impacts

Committed to a Comprehensive Community Benefits Program

Acknowledge and address the reality that impacts are local to the Delta, but direct project benefits accrue to other parts of the state

- Overarching Delta Fund
- Leave-behind infrastructure
- Targeted hiring, job training and business participation expectations
- Open to town-by-town community benefits agreements

Status Update

- Draft Environmental Impact Report (EIR) 142-day public comment period: July 27, 2022 – December 16, 2022
- EIR finalized in late 2023
- Additional environmental planning and permitting processes underway

